

Sharon Arts Center

SCHOOL OF ART & CRAFT

Spring 2011 Classes & Workshops



www.sharonarts.org



Follow us on
Facebook!

Dear Friends,

Wouldn't it be great if everyone had access to affordable art classes? You could spend time honing your skills, creating a masterpiece, talking with artists, or learning about arts culture; children could learn creative problem-solving skills, meet art-loving peers, and build self-confidence through finishing an art project that they treasure for years to come. **Well, now everyone can partake in affordable art classes!**



Over the past year, scholarship requests have tripled, and Sharon Arts has been able to grant those requests, which is encouraging to me—it is my goal to increase awareness of this opportunity. The Sharon Arts Grant committee is a group of volunteers dedicated to obtaining funds to allocate to scholarship recipients, as part of our mission to make education in the arts accessible to anyone who has a desire to learn.

Coupled with other resources, (such as the Earn & Learn Volunteer Program, or our “Refer a Friend” tuition discount,) a scholarship could be the key to getting you into the classroom. Our application process is confidential, simple and user-friendly, and our office staff is available to assist with questions. Why wait? Make the time for yourself today, so you can have a more creative tomorrow.

To anyone who would like to take a class, but feels hindered by their economic situation, please contact us—we have options to make your education journey a success. No matter your age, ability or background, our doors are open. In fact, stop by the school for a visit, take a tour, express your interests, and we will get you on your way.

Alexandra Wall
School Director
alexandra@sharonarts.org



Questions? Need info?
Call us weekdays
8:30am–4:30pm @ **603.924.7256**
or email register@sharonarts.org

BOARD OF TRUSTEES

Carolyn C. Howard, *Board Chair*
Stephen Gehlbach, *Vice Chair*
Debra Strickland, *Treasurer*
Honorable L. Phillips Runyon III, *Secretary*

George B. Foote, Jr.	Nancy Massey	Penny Warfield
Judson D. Hale, Sr.	Barbara Pelkey	Ann Wilkins
Harry J. Healer, Jr.	Laura Redmond	
Terry Heinzmann	Tom Strickland	
Michael B. King	Erin Sweeney	

Honorary: Gov. Walter Peterson, David E. Howe

What's Inside

SPECIAL PROGRAMS

Community Collaborations	3
Youth & Teen Programs.....	4
Spring Open House & Pottery Potluck Fundraiser	5
Artist Professional Development	6

SPRING CLASSES & WORKSHOPS

Book & Journal Arts.....	7
Clay.....	7
Drawing.....	8
Fiber	12
Glass	13
Jewelry & Metal	15
Natural Arts.....	17
Painting.....	17
Photography & Digital Media	23
Faculty Biographies.....	27
Volunteer, Earn & Learn, Scholarship Info	29
Registration Info & Policies.....	30
Registration Form	31

Community Collaborations Spotlight:

Did you know that Sharon Arts Center has many partners in the business community that provide support to help us meet our mission? From exhibition sponsors to in-kind contributors, many generous businesses (large and small) give to us in meaningful ways. In each newsletter we'll shine a spotlight on one of our business or community partners who support and amplify the work of Sharon Arts.

Sequoia Seeds Support SAC's Needs

Sequoia Technologies of Peterborough, owned by Tom and Debra Strickland, is an IT management company that truly believes in the values of strong connections between commerce and community. Sequoia is also known for its innovative donation program called Sequoia Seeds. Through this ground-breaking program, each of Sequoia's clients is asked to choose a local non-profit that will receive an ongoing monthly IT credit equal to 5% of that client's monthly service fees. "Without the support of Sequoia Seeds, many of the specialized IT services we rely on would be out of reach," said Melanie McDonald—SAC's Dir. Of Community Outreach & Communications. Through this program, Sharon Arts Center receives subsidized IT services along with computer hardware and software. Currently, Sequoia is donating over \$1300 per month to several Monadnock area non-profits.

The Stricklands explain, "The amount we donate to our non-profit neighbors increases automatically as Sequoia's business expands. Since starting the Sequoia Seeds program in 2007, business has expanded exponentially- the effect to our Seeds recipients is like instant karma!" The Stricklands are regular visitors to the Sharon Arts Galleries in downtown Peterborough, and Debra has also enjoyed many classes and workshops in ceramics and Chinese brush painting at the school in Sharon. For these reasons and more, in 2009, Tom and Debra joined SAC's Board of Trustees, where they are actively involved in many aspects of the organization.



Please consider the ways that your business can provide support to Sharon Arts Center through a community partnership. From in-kind needs for furniture, paint, and equipment, to needs for specialize expertise in marketing efforts, facility systems, and more—every generous gift helps us to direct our limited resources to meeting our mission in the community. All of our business contributors receive our gratitude, gift-receipts, and extensive promotion on our website, facebook page, and throughout Sharon Arts.

Please visit the "Contribute" button on our website for a complete list of our current needs. Contact Grant Coordinator, Penny Warfield, at wareagle@rcn.com or 617-482-3936 to discuss ways to match your businesses interests to Sharon Arts Center's needs.

SPRING 2011

YOUTH & TEEN PROGRAMS



Searching for enriching ways for your young artist to spend after-school time? Are you a homeschool family seeking art instruction? Our programs provide opportunities for art-hungry students to experiment with various materials, processes and concepts in a fun, social setting. Each youth program is filled with art adventures, challenges, collaborations and opportunities for a deeper understanding of fine art and craft.

YOUTH PROGRAM After School Clay Club

James Mitschmyer

6 WEEKS (MAY 3–JUNE 7)

TUESDAYS, 3:30–5:30PM

If you like to play in the mud, this is the place for you! In the After School Clay Club you'll get messy while making fabulous clay creations. Get creative and explore different ways to build with coils, slabs and more. During this class you will also learn to spin on a potter's wheel. Discover how to turn mud into something permanent! Come with your creative ideas and leave with sculptures and pots that will last forever. Bring an apron or an old shirt so you can get muddy. *Materials fee: \$20.*

M \$130, NM \$155. | ASCC

Ages 7+
Teens also welcome!

TEEN PROGRAM Teen Torch: Glass Galore

Janet Duchesneau

6 WEEKS (MAY 3–JUNE 7)

TUESDAYS, 3–5:30PM

From beads and buttons to small vases and sculptures, explore "melting madness" on the torch, using both soft (Italian) and hard (Borosilicate) glass. Teen torchworkers will learn about studio safety as they skillfully manipulate glass to create amazing and unique works of wearable, decorative, and functional glass art. Learn to shape, blow, and balance glass on and off the mandrel. Join us as you add a new dimension to your portfolio and enjoy learning about the scientific properties of this fun and addictive medium. *Materials fee: \$50.*

M \$140, NM \$165. | TTGG

13+



SCHOOL VACATION ARTVENTURE CAMP

MONDAY–FRIDAY / APRIL 18–22

8:30 AM EARLY DROPOFF AVAILABLE

MORNINGS: 9AM–12:30PM **M \$150, NM \$175**

FULL DAYS: 9AM–4PM **M \$325, NM \$375**

For more information: (603) 924-7256

Spring Open House & Pottery Potluck Fundraiser!

Saturday, April 16th, 10am–3pm

10am–12noon WORKSHOPS & DEMOS

Art Journals – Nancy Lefko
Digital Image Editing – Rhonda MacLeod
Glass Bead & Sculpture – Janet Duchesneau
Intro to Oil Paint – Robert Seaman
Wheel-throwing – James Mitschmyer

12noon–1pm: LUNCH & POTTERY POTLUCK FUNDRAISER

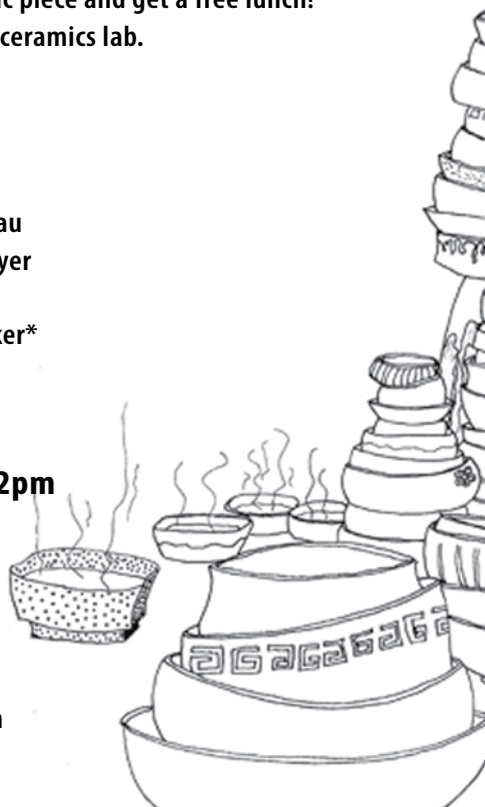
BYO or buy a handmade ceramic piece and get a free lunch!
Purchase proceeds benefit the ceramics lab.

1–3pm: WORKSHOPS & DEMOS

Drawing- Robert Seaman
Glass Bead & Sculpture – Janet Duchesneau
Handbuilding with Clay – James Mitschmyer
Polymer – Connie Gray
Portrait Photography Studio – Elsa Voelcker*

STUDENT EXHIBITION OPENING! – 2pm RAFFLE PRIZE DRAWING! – 3pm

* Meet photographer Elsa Voelcker and get a free portrait photo—even get involved in her artist grant project on tattoo photography. Meet instructors and other students, Learn about upcoming events, learn about our volunteer Earn & Learn Program.



Artist/Teacher Professional Development Series

Integrative Learning: A Creative Approach to Purposeful Learning

For High School, College, & Community Educators



SAT., APR. 9 / 8:30 AM–12 NOON

■ Location: Sharon Arts Exhibition Gallery, Peterborough

Presenters: Jerry Burns (FPU Prof. of English); Joni Doherty (FPU–Dir. of the New England Center for Civic Life); Heather Weibel Tullio (FPU Associate Prof. of Mass Communications); FPU Student Collaboration participants; and Christine Destrempe, artist & founder of Art for Water.

This presentation and workshop will focus on a multi-disciplinary approach designed for those interested in integrative learning about the ways in which water and words communicate. Explore models, strategies, tools, and best practices about interdisciplinary collaboration to integrate skills and knowledge from many disciplines into existing courses through a collaborative thematic project. After a presentation of a semester-long collaborative project between English and Mass Communication faculty, participants will engage in hands-on activities exploring water from an array of disciplinary perspectives: visual arts, natural sciences, social sciences, and writing. Breakout sessions will take groups of participants led by FPU faculty and students into downtown Peterborough on foot to examine and explore water-related issues through an array of media—returning to the gallery to share their findings with the larger group. Participants will receive a DVD of the work they created during the morning and a documentary of the Art for Water at FPU, which explains how this type of integrative learning project can be organized at a high school or college. Attendance certificates are available by request. **COST: \$50/ individual, \$100 for a team of 3 educators from same institution (\$35 for each additional educator beyond the 3 when registering as a team.) Scholarships are available.**

Sewing for the Classroom *Heather Lawless*

TUES., MAY 24 / 4–7PM

■ Location: Sharon Arts School, Sharon

Televised competitions like Project Runway have sparked a sewing revival in a whole new generation. Unfortunately, knowledgeable seamsters are a dying breed, and home economics is no longer offered in schools. Captivate your students by integrating sewing skills into the classroom. Learn hand stitching, sewing machine and construction basics to enrich classroom art projects and support historical lessons. Learn to teach needlepoint like an American colonist and DIY clothing creation like a fashion designer. Attendance certificates are available on request. **M \$45, NM \$55. | PD2**



Competitive Applications and Portfolios *Heather Lawless*

THURS., JUNE 9 / 4–7 PM

■ Location: Sharon Arts Exhibition Gallery, Peterborough

Just like the current job market, opportunities for artists have become highly competitive as demand increases for dwindling resources. Get an edge up on other applicants by learning tips that grant-giving institutions, galleries and curators do want you to know! This informative seminar will prepare you to draft artist resumes, project proposals, budgets and personal statements for scholarships, art school applications, call for entries, jury applications, grants, public art proposals, and teaching positions. Learn what constitutes a strong portfolio and how ordering, labeling and formatting your images correctly will make or break an application. This seminar is fitting for emerging and established artists, as well as teachers who would like to assist students with scholarship and college applications. **M \$40, NM \$50. | PD3** ★ Looking for more help? Sign up for a hands-on workshop to help you edit and format your portfolio images in manageable sizes (see p. 26).



Call 603-924-7256 today to register, or email: register@sharonarts.org

SPRING CLASSES AND WORKSHOPS

Book & Journal Arts

WEEKLY

Books from Scratch!

Celeste Wasilewska

6 WEEKS (MAY 9–JUNE 20)

MONDAYS, 6:30–9PM

[No class May 30]

B Master bookmaking basics in just six weeks! Using basic bookbinding techniques, we will create one-of-a-kind handmade books with an array of uses. Students will learn Coptic bindings such as the French and chain stitch along with other accessible sewing techniques. Learn to make your own paste papers for covers, tint the pages and use a variety of papers and materials to build a book you'll always treasure. A variety of papers, covering materials and interiors will all be demonstrated and explored. Discover the many possibilities of the handmade book in this fun and informative six-week class. All levels welcome. *Materials fee payable to instructor: \$25.*

M \$130, NM \$160. | B1



Mixed Media Art Journals

Nancy Lefko

3 WEEKS (JUNE 13–JUNE 27)

MONDAYS, 10AM–1PM

B Venture into the world of visual journaling, an expressive outlet and playground for your creativity. Explore a variety of techniques and materials while creating art for art's sake; art that is yours alone and uniquely "you." Keep an artful record of special events or travels as we explore journaling "on the go." All levels are welcome as we play creatively and grow into our individual styles. Remember- it's the journey, not the destination. *Materials fee payable to instructor: \$10. M \$85, NM \$105. | B2*

Clay

WEEKLY

[See p. 5 for information about our special After School Clay Club for kids!]

Clay for All Levels

James Mitschmyer

10 WEEKS (MAY 4–JULY 6)

SESSION 1: WED, 10AM–1PM | **CM1**

SESSION 2: WED, 6–9PM | **CM2**

Janet Duchesneau

10 WEEKS (MAY 5–JULY 7)

SESSION 1: THURS, 9:30AM–12:30PM | **CD1**

SESSION 2: THURS, 6–9PM | **CD2**

B This course is for students of all levels. Students will be encouraged to experiment, develop new skills and learn to communicate creatively in clay. Students may choose to use class time to work on individual projects or assignments designed to build and develop skills. There will be a mix of wheel-throwing and hand-building techniques discussed and demonstrated throughout the class. Surface and form relationships will also be addressed as you follow your creations through the ce-

SPRING CLASSES AND WORKSHOPS



ramic process. Weather permitting; the session will end with a group Raku firing and potluck party. Enrolled students will have unlimited access to open studio hours for the duration of class as a part of tuition. *Lab/Materials/Open Studio fee: \$60 (includes first bag of clay and Open Studio time). Additional clay available for fee during class time.*

M \$230, NM \$275.

Metrical Multiples: An Intro to Moldmaking and Slip Casting

James Mitschmyer

8 WEEKS (MAY 16–JULY 18)

MONDAYS, 6–9PM

[No class May 30 or July 4]

B This course will focus on creating molds out of plaster. Molds may be made from found objects as well as sculpted forms. We will explore a range of forms, functional and conceptual, simple to complex. Traditional ways of making both single and multiple piece molds will be demonstrated as well as proper preparation of plaster and slip. Students will be shown how to use casting slip to create multiples from their mold. Leave this class with the basic knowledge of how to craft your own molds and how to make a multitude of multiples. **M \$185, NM \$200. | CM3**

CLAY WORKSHOP

Glaze Chemistry

James Mitschmyer

SATURDAY, MAY 7 / 10AM–3PM

During this workshop, students will discover what makes a glaze a glaze, and clay... well, clay. We will cover all the materials used in formulating glaze and their functions. Different firing techniques and their effects on clay and glaze will be discussed. Students will mix test batches of glaze to produce their own unique colors and textures. These tests will be available in the weeks following the workshop. This class is for potters and ceramic artists alike who want to gain more control and greater understanding of the materials they use. **M \$80, NM \$95. | CWA**

Drawing

WEEKLY

Open Studio: Figure Drawing

Facilitated by Kathryn Briggs

8 WEEKS (MAY 3–JUNE 21)

TUESDAYS, 6–8PM

The human form, real and abstract, in line and full color is important to explore as one of visual arts' foundations. For artists looking to pursue formal art education- figure drawing is a key part of any portfolio. Participants can enjoy the company of other artists, while they work in the medium of their choice to capture the details of a different male or female model each week. Register for all 8 weeks, or drop in for individual weeks as space allows. Artists of all skill levels are welcome to participate, working freely at their own pace- this class will be facilitated, not taught. Easels, drawing boards and tables will be available. **M \$185, NM \$200. Model fee: \$50. (Weekly drop-in rate: M\$40, NM\$50, –includes model fee.) | D1**

SPRING CLASSES AND WORKSHOPS

Exploring the Charcoal Portrait

Kathryn Briggs

8 WEEKS (MAY 4–JUNE 22)

WEDNESDAYS, 1–4PM

B This class is for anyone interested in capturing the most intriguing of subjects—the human face. Using charcoal, we can capture the briefest of gestures or the glow of something more permanent—the medium allows for great flexibility and is very forgiving. Working from live models, and through long and short drawing studies, we will first establish a familiarity with the anatomy of the head. Then, by incorporating values, we will bring the portrait into three-dimensionality. All skill levels welcome. *Model fee: \$80.* **M \$185, NM \$200. | D2**

Deep “See” Drawing

Robert Seaman

8 WEEKS (MAY 3–JUNE 21)

TUESDAYS, 10AM–1PM

B This drawing course is ideal for beginners and those who want to refresh their drawing skills. We will focus on the basics, working from the start with two- and three-dimensional subjects and in the process, we will explore the nature of various materials; study relationships of form, scale and depth creation and value, and practice rendering techniques and the fundamentals of composition. A great deal of emphasis will be placed on “relearning”—how to see both the subject and one’s own work clearly. Lots of individual attention in a supportive atmosphere designed

for beginners and those seeking a refresher course. **M \$185, NM \$200. | D3**

More Seeing, More Drawing

Robert Seaman

8 WEEKS (MAY 10–JUNE 28)

TUESDAYS, 1:30–4:30PM

Designed for intermediate students with a working knowledge of drawing principles, participants choose their own subjects and drawing mediums with gentle guidance from the instructor. There will be individual and group critiques as well as helpful demonstrations for the effective use and application of various drawing mediums, styles and techniques. The atmosphere is informal and supportive of artists who wish to broaden their drawing vocabulary and improve their skills. This class is great for anyone feeling rusty, or that want to improve their painting through improving their drawing abilities.

M \$185, NM \$200. | D4

Drawing Bootcamp

Celeste Wasilewska

8 WEEKS (MAY 4–JUNE 22)

WEDNESDAYS, 6–9PM

This class is designed for those who are somewhat new to drawing or perhaps already possess skill but are looking to further refine their technique. Focus on form, proportion and perspective, along with strengthening more basic drawing concepts, such as line, value and shading. Boost your drawing confidence and take your drawings to the next level as you hone skills in a supportive atmosphere alongside other artists. Expand your definition of drawing to include other forms of mark-making and improve your abilities through a series of drawing exercises experimenting with a variety of materials. Develop your drawing language and style. Plan to share your recent work and to bring “problem” drawings as material for class exploration. There will be individual and group critiques to motivate you each week. All skill levels welcome.

M \$185, NM \$200. | D5



Robert Seaman teaching class

SPRING CLASSES AND WORKSHOPS

Painterly Colored Pencil

Gary Ruuska

8 WEEKS (MAY 4–JUNE 22)

SESSION 1: THURS, 10AM–1PM | **D6A**

SESSION 2: THURS, 6–9PM | **D6B**

B This class is designed for those who are somewhat new to drawing or perhaps already possess skill but are looking to further refine their technique. Focus on form, proportion and perspective, along with strengthening more basic drawing concepts, such as line, value and shading. Boost your drawing confidence and take your drawings to the next level as you hone skills in a supportive atmosphere alongside other artists. Expand your definition of drawing to include other forms of mark-making and improve your abilities through a series of drawing exercises experimenting with a variety of materials. Develop your drawing language and style. Plan to share your recent work and to bring “problem” drawings as material for class exploration. There will be individual and group critiques to motivate you each week. All skill levels welcome. **M \$185, NM \$200.**

DRAWING WORKSHOPS

Looking for Shadows

Robert Seaman

SATURDAY, MAY 7 / 10AM–4PM

B Modeling by light and shadow is one of the strongest visual cues that help us define forms and perceive them as three dimensional objects. This workshop will explore the differing ways we process lights and darks (“values”) in two- and three-dimensional subjects, suggest techniques of seeing them clearly and how to manipulate them to create depth and roundness in our drawings and paintings. In addition to exercises we’ll inspect the work of well-known (and not-so-well-known) artists to see how they’ve handled light (and “darkness”) in their work. The workshop is designed for beginners and/or a review of the

basics for more experienced artists.

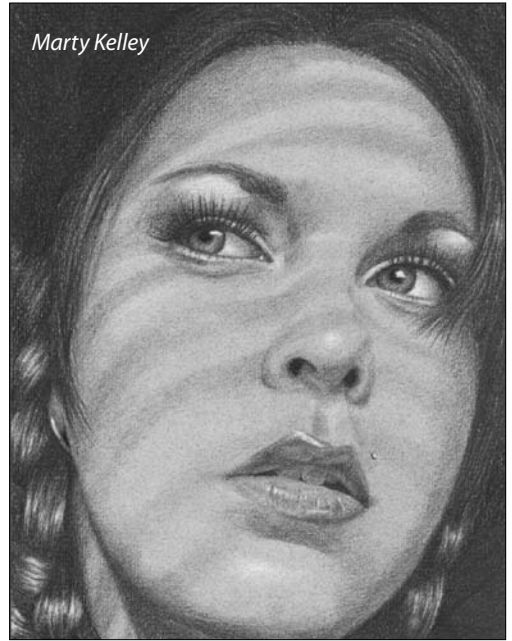
M \$95, NM \$115. | DWA

Two-Tone Portraits

Marty Kelley

SATURDAY, MAY 14 / 10AM–4PM

✦ **B** Spend the day learning how to create stunning portraits using graphite pencils and chalk on toned paper. We will spend time learning how to work from photographs and



build up values to make rich, eye-catching portraits. Some drawing skills will definitely make this easier for you, but all are welcome.

M \$95, NM \$115. | DWB

Drawing the Still-Life

✦ *Elizabeth Johansson*

TWO OPTIONS TO TAKE THIS CLASS:

SATURDAY, MAY 14 / 10AM–4PM | **DWC1**

SATURDAY, JUNE 4 / 10AM–4PM | **DWC2**

✦ **B** Sharpen your pencils...sharpen your skills! To begin this drawing workshop we will discuss how and why we choose certain objects to include in a still life. Individuals will begin with a few quick sketches to better “see” and understand the still life and to create a composition prior to starting their drawing. We will be working with graphite pencils, render-

SPRING CLASSES AND WORKSHOPS

ing form in value, line, shadow, cast shadow. We will also consider perspective, proportion and spatial relationships of the objects in creating a drawing. Each artist has their own style and vision; this workshop is designed to build skills and to motivate! There will be plenty of individual attention given to each participant to develop and improve skills as needed. **M \$115, NM \$135.**

Objective: Perspective

Robert Seaman

SATURDAY, MAY 21 / 10AM–4PM

B The sheer mention of the term *perspective* often generates fear and anxiety in the aspiring artist, but unfairly so, for it's simply the way we see things. This workshop explores, explains, demonstrates and applies how we use various types of perspective to create the impression of depth in our paintings and drawings. Though perspective has gotten a bad rap, we will demystify, simplify and make the subject understandable and useful.

M \$95, NM \$115. | DWD



Colored Pencil for Absolute Beginners

Gary Ruuska

TWO OPTIONS TO TAKE THIS CLASS:

SATURDAY, MAY 28 / 10AM–3PM | **DWE1**

SATURDAY, JUNE 25 / 10AM–3PM | **DWE2**

B Discover how the deceptively simple and convenient medium of colored pencil can be used to create wonderfully complex and detailed works of art on a marble-dust coated board. Working from a photograph and line drawing provided by the instructor, we will focus on layering techniques for building color, texture, and form. We will also discuss materials as they apply to this medium, and the best ways to seal and protect your new creation so that it can be displayed like a painting, without glass. *Bring "Pastelbord," or purchase from the instructor (\$5-10.)* **M \$80, NM \$95.**

Getting a Handle on Hands

Kathryn Briggs

SATURDAY, JUNE 4 / 10AM–2PM

B Hands—a body part oft maligned by artists and draftsmen. Let's take a day to give



SPRING CLASSES AND WORKSHOPS

them some much needed attention. During this workshop students will examine the gesture, anatomy and range of motion of hands, through quick charcoal studies from the model and anatomical discussions. All skill levels welcome. *Model fee: \$30.*

M \$65, NM \$80. | DWF

Expressive Self-Portraits

Kathryn Briggs

SATURDAY, JUNE 11 / 10AM–3PM

B Come break out of the box of traditional self-portraits, and bring out a bit of your inner personality, on paper! Explore through color and form, not just what you look like, but how you feel, as well. Students will begin the workshop learning how to craft a convincing self-portrait in pencil, they will then be challenged to express emotions, hopes, and inspirations through mixed media. Take away inspiration for more abstract and expressive possibilities in your personal artwork practice. All skill levels welcome.

M \$80, NM \$95. | DWG

Drawing is “For the Birds!”

Robert Seaman

SATURDAY, JUNE 18 / 10AM–4PM

B It is often said that the best way to really see something is to draw a picture of it... or them. We'll draw birds and nests, feathers and eggs, and even old decoys in an attempt to depict these amazing creatures in their natural habitat. Especially designed for those who enjoy observational drawing from life and objects, this workshop will help you to see nature's creatures in a different light. Participants may bring photos, field guides, a nest they found... or a scruffy owl from the attic. The instructor will provide a variety of resource materials as well. Participants are welcome to work in whatever medium they prefer, but we will begin with sketchbooks, pens and pencils.

M \$95, NM \$115. | DWH

Fiber

WEEKLY

Weaving for the Spring

Connie Gray

8 WEEKS (MAY 6–JULY 1)

FRIDAYS, 10AM–1PM

[No class on May 13]

B Create something beautiful! Explore a weave structure you have not yet tried! Learn a new skill, or review and refresh your Weaving skills in this 8-week class! We will select yarns, plan and wind a warp, dress the loom, and weave a project of your choice (or a sampler of many patterns!) With emphasis on color design, patterns, or both, you will have a piece of handmade fabric to make you proud. Looms and equipment will be provided; yarn choices (your purchase) will be discussed. Reading and drafting patterns will be covered, and finishing techniques too. Individual instruction is always available. Students will have access to open studio time. (Class lim-



SPRING CLASSES AND WORKSHOPS

ited to six looms, so sign up early to reserve yours!) *Loom & open studio fee: \$30.*

M \$185, NM \$200. | F1

FIBER WORKSHOPS

Weaving for a Small Space

Connie Gray

SATURDAY, MAY 21 / 10AM–4PM

Weavers! Despair not! Even if you do not have space for a large-scale, or floor loom, you can still weave substantial projects on a rigid-heddle loom! This simple style of loom can be as narrow as 8" (for scarves, runners, small pillows,) OR your weaving can be pieced together to create larger items (clothing, shawls, table linens, home decor items.) Stunning garments can be woven in various colors and patterns—from stripes to plaids to lacy weaver-manipulated structures—your imagination is the limit! We will cover design, warping the loom, weaving tips and tricks, and finishing details. Individual guidance will be provided. The instructor can provide a limited number of looms at request, or students should bring a rigid-heddle loom. *Yarns are available for a fee (\$5-10 payable to the instructor,) or you may bring your own.* **M \$90, NM \$100. | FWA**

Felted Critters

Ella Rank

TWO OPTIONS TO TAKE THIS CLASS:

SATURDAY, MAY 21 / 10AM–3PM | **FWB1**

SATURDAY, JUNE 18 / 10AM–3PM | **FWB2**

B In a quest to spread the good word about sheep's wool, we will use fleece from New Hampshire sheep—either in natural colors or dyed, to needle-felt a new friend. Our creations will be mini-sheep, decorations for any occasion—on or off a tree, or in a seasonal setting. Give your sheep to a friend, or create your own menagerie of critters. Your newly created, sheepish companion will become a long-treasured, precious keepsake. Come learn about needle-felting basics, and how wool can be transformed for a wide array of

fun projects, decorative and functional. All ages are welcome. *Materials fee: \$12 payable to instructor.* **M \$90, NM \$100.**

Glass

WEEKLY

[See p. 5 for information about our special Teen Glass Class!]

Boro: Hard Glass Made Easy

Janet Duchesneau

8 WEEKS (MAY 5–JUNE 23)

WEDNESDAYS, 10AM–1PM

Explore the basics of lampworking with borosilicate glass on a minor burner torch. You'll learn about the equipment, materials, and tools and how to safely use them to form and control molten glass with skill. Learn about the science of glass and the ways gravity can help or hinder your efforts. We will also discuss various techniques, designs and patterns specific to borosilicate glass. In addition to instructor demonstrations, we will learn about pioneering glass artists. Open studio time available to students for an additional hourly fee. *Lab/Materials fee: \$75.*

M \$185, NM \$200. | G1

Glass Bead & Sculpture

Marta Bernbaum

8 WEEKS (MAY 6–JUNE 24)

THURSDAYS, 11AM–2PM

B Experience the magic of glass in this class designed for all levels. We will begin with the fundamentals of lampwork glass bead making using Italian (soft) glass and/or borosilicate (hard) glass on the minor burner torch. Learn about the equipment, materials and tools and how to use them safely and with confidence. Play with color, dots, stringers, silver foil, enamels, frits and more. Each week will present new demos and project ideas. Focus on building a variety of new skills or zero in on the elements of lampworking that excite

SPRING CLASSES AND WORKSHOPS

you the most. In addition to instructor demonstrations, we will learn about pioneering glass artists. Beginners will have ample time and instruction, and more advanced students can work on projects of their own design with the guidance of our instructor. Open studio time will be available to registered students with a small hourly fee. *Lab/Materials fee: \$75. M \$185, NM \$200. | G2*



GLASS WORKSHOPS

Glass Bead for Beginners

Janet Duchesneau

TWO OPTIONS TO TAKE THIS CLASS:

SATURDAY, MAY 7 / 10AM–3PM | **GWA1**

SATURDAY, JUNE 25 / 10AM–3PM | **GWA2**

B Experience the magic of glass beads! In this “hot” one-day workshop, beginners learn the basics of lampwork glass bead making with glass on the minor burner torch. In addition to instructor demonstrations, the class will provide time to explore the medium. We will learn about studio safety as we enjoy the magic of this fun (and addictive) medium. If you have some comfort and/or prior glass skills, we’ll explore ornaments, marbles and small sculpture. (Beads will be ready for pick up on or after Monday, May 9/June 27, or can be shipped for \$5.) *Materials fee: \$35. M \$95, NM \$115.*

Glass Marbles

Marta Bernbaum

SATURDAY, JUNE 4 / 10AM–2PM

B “Roll” into Sharon Arts for this beginner to intermediate level marble making class. In just one day, you will learn to use marble molds, paddles and gravity to properly shape the glass. You’ll also learn how to pull stringers, make cane work, and exciting new techniques for marbles that you can use with other glass lampworking projects. (Marbles will be ready for pick up on or after Monday, June 6, or can be shipped for \$5.) *Materials fee: \$35. M \$65, NM \$80. | GWB*

Stained Glass Suncatchers

Marta Bernbaum

SAT&SUN, JUNE 11&12 / 10AM-1PM

B This two-day workshop will be an introduction to basic stained glass. Students will first design their template to guide the process of cutting apart the needed glass pieces—using special cutters and pliers. We will then grind the pieces to their defined shapes, and then solder them together to create a simple and beautiful suncatcher. *Materials fee: \$35. M \$100, NM \$130. | GWC*



Mizzy Boyle

SPRING CLASSES AND WORKSHOPS

Jewelry & Metal

WEEKLY

Beading Studio

✦ Mizzy Boyle

MONDAYS, 1–4PM, 3 WEEKS /SESSION

SESSION 1: MAY 2–MAY 16 | J1A

SESSION 2: MAY 23–JUNE 13 | J1B

SESSION 3: JUNE 20–JULY 11 | J1C

[No class May 30 or July 4]

✦ **B** Students can take one or any of the 3 sessions, each session focusing on a different set of stitches. The 9 weeks of class will progress through a series of traditional and adapted beading stitches: Spiral, Russian Spiral, Bead Soup, Herringbone, Brick, Russian Rope, and Netting. Students can work on a variety of jewelry projects throughout using seed and Swarovski beads, applying what they learn. *Materials will be available for purchase from the instructor, ranging \$10–15.*

M \$95, NM \$115 per session; M \$250, NM \$275 for all 3.

Jewelry 1 for Beginners

Joy Raskin

8 WEEKS (MAY 4–JUNE 22)

WEDNESDAYS, 10AM–1PM

B Working with metals is fun and empowering! Students will explore basic fabrication and finishing techniques for metal jewelry, including piercing, sawing and forming, solder-

ing, basic stone setting and polishing. Beginners will work toward completing a pendant, a pin and a ring, while more advanced students can work on individual projects, refining their skills and exploring more complex techniques such as riveting, the marriage of metals, mechanisms and more. All skill levels are welcome. *Lab fee: \$40. Materials fee \$40–\$85 (depending on scope of project) payable to instructor.* **M \$185, NM \$200. | J2**

Fun with Wire

Joy Raskin

8 WEEKS (MAY 4–JUNE 22)

WEDNESDAYS, 1:30–4:30PM

B Wire is such a fascinating, flexible medium, you can do so much with it. We will coil, wrap, tinker, weave, twine, braid, crochet, knit, twist and much more to make all kinds of fabulous jewelry and accessories. Wire is not just confined to jewelry, but can be used to make vessels, baskets, lampshades and other interesting home accessories- even sculpture. Best of all, it's low-tech and utilizes common tools—pliers, wire cutters, masking tape, a Sharpie marker, a mallet, a steel square and a ruler is pretty much what you need. We will be using colored copper wire, brass, bronze, nickel and silver wire. *Materials fee, payable to the instructor: \$45.* **M \$185, NM \$200. | J3**

JEWELRY & METAL WORKSHOPS

Soldering 101

Joy Raskin

SATURDAY, MAY 7 / 10AM–4PM

B Ever struggle with soldering and wanted to improve your soldering skills? Or not sure how to set up your own soldering torch and tank? This one day workshop will cover the

Scholarships and financial aid are available. Contact the school office (603-924-7256) or visit us online for an application.



SPRING CLASSES AND WORKSHOPS



basics of how to set up your own soldering torch and tank, and workspace, as well as cover potential soldering issues. We will learn about all the basics, from butt joints to stick soldering, and we will work to help you gain confidence with a torch. Great for those who have been taking jewelry classes but want to improve on soldering, as well as those who want an understanding of the process. *Materials fee payable to instructor: \$10. M \$95, NM \$115. |JWA*

Beading Studio: Flat Spiral

✦ Mizzy Boyle

SATURDAY, MAY 14 / 10AM–2PM

✦ **B** This workshop will teach you a stitch that is beautiful and looks difficult, but is amazingly easy to do, and the variations are endless. Students can also learn about incorporating a focal bead to create interesting, personalized jewelry. This stitch is so much fun—you may just get hooked. *Materials list is available, or buy a kit from the instructor (\$5). M \$65, NM \$80. |JWB*

Kinetic Art: Mobiles

Vladimir Barsukov

SATURDAY, MAY 28 / 12NOON–4PM

B There is something magical about mobiles. Like living creatures, they can be humorous, meditative or graceful. In this workshop, we will look at works of Alexander Calder and explore ways to balance, assemble, and hang mobiles using heavy paper, different types of wire,



and metal sheets. Students will be encouraged to create their own unique designs and will take home at least two mobiles. [This workshop is limited to 6 participants.] *Materials fee payable to instructor: \$35. M \$65, NM \$80. |JWC*

Beading Studio: Swarovski Pendants

✦ Mizzy Boyle

SATURDAY, JUNE 4 / 10AM–2PM

Another addictive beading project! You can't make just one! Beautiful sparkly pendants make wonderful gifts. Students will have time to make several pendants, and can also explore making matching earrings. Play with colorful beads to create something simple yet elegant. *Materials list is available, or buy a kit from the instructor (\$5). M \$65, NM \$80. |JWD*

Resin Jewelry

Joy Raskin

SATURDAY, JUNE 11 / 10AM–4PM

B Instead of using stones to set in jewelry, why not use resin? Come explore the colorful, fun world of resin and add color to your jewelry! Using a two-part, quick-setting epoxy, we will add paint, herbs, tea leaves, colored powder, glitter and much more, to create color for applying onto jewelry. This technique is great for jewelry with texture, recessed areas, empty stone settings, or anything else that you want to try. The instructor will provide epoxy and some coloring agents, but students should feel free to bring anything that they want to add to make resin-filled jewelry. Even twigs have been used for resin jewelry! *Materials fee payable to instructor: \$20. M \$95, NM \$115. |JWE*

SPRING CLASSES AND WORKSHOPS

Beading Studio: Peyote Stitch

✦ Mizzy Boyle

SAT. & SUN., JUNE 11 & 12 / 10AM-2PM

✦ Admittedly the favorite of the instructor, this stitch is so versatile that it can be used in a simple rope or earrings, as well as vessels and sculptures, bracelets and more! Learn how to do the basic stitch and then apply it to whatever you want- students can discuss ideas, share colors, and get creative with their beaded inspirations. *Materials list is available, or buy a kit from the instructor (\$10).*

M \$120, NM \$155. | JWF

Polymer Accents for Fiber Artists

Connie Gray

SATURDAY, JUNE 25 / 10AM-3PM

B Here is a “hands-on” polymer clay workshop for all who work with fiber: weavers, knitters, crocheters, quilters, felters, and fashion designers! Using colorful, versatile polymer clay (Fimo, Premo, Kato,) make unique accessories to accent your fiber work, accessories or clothing: buttons, jewelry, shawl pins, embellishments and more! Polymer clay can be sculpted, stamped, impressed, or “caned” to make multiples or “one-of-a-kind” ART. Bake it in our toaster ovens, and take home your finished accent piece to adorn your fiber creations! Beginners are welcome, all ages are welcome. Instructor will provide the tools and equipment. *Materials list is available, or buy clay from the instructor (\$10).*

M \$80, NM \$95. | JWG

Natural Arts

WEEKLY

Creative Landscape Design

Eryk Jadaszewski

8 WEEKS (MAY 5-JUNE 23)

THURSDAYS, 6-8:30PM

B The class involves several aspects of horticulture with an emphasis on designing and drawing your own residential or small busi-

ness landscape plan. Students will learn the whole process, from the inspiration and design stage to site preparation and selection of plants and materials. We will also discuss plant and “hardscape” installation right up to the final stage of project completion. Not to be missed, we’ll end with an important discussion about anticipating the ongoing maintenance and aftercare of your newly planted and installed gardens. Students will be able to create a scale-measured landscape plans to implement their own project.

M \$185, NM \$200. | N1

Painting

WEEKLY

Creating a Series: Getting Out of the Rut!

Mary Iselin

8 WEEKS (MAY 2-JULY 27)

MONDAYS, 10AM-1PM

[No class May 30]

B As artists, we all dream of special projects. These can range from illustrating a book, to painting a dozen landscapes, to trying a new medium. Sometimes, these dreams remain unrealized due to inertia or fear, or because we are simply stuck in a rut. “Creating a Se-



Mary Iselin

SPRING CLASSES AND WORKSHOPS

Scholarships and financial aid are available.

Contact the school office (603-924-7256) or



visit us online for an application.



ries” implies that we need more than one work of art to explore an idea or technique. In this class, we will identify our individual artistic longings; formulate workable, realistic goals for a series of paintings or drawings in which these longings can be expressed, and then work toward accomplishing these goals in a supportive group environment. All levels and all media are welcome. **M \$230, NM \$275. | P1**

The Dance of Color

Mary Iselin

8 WEEKS (MAY 2–JULY 27)

MONDAYS, 1:30–4:30PM

[No class May 30]

✪ **B** Do you love color? Is color the main thing that excites you about painting? Do you want a venue to explore color and color relationships more deeply, and to understand more about your personal relationship with color? In this class, we will delve into the mysteries of color and color theory, work with the color wheel (do you know how many color wheels there are?!) and practice putting some of these theories into effect in our own work. We will attempt to complete at least seven finished works, as well as numerous smaller studies. The structure of the class will entail gentle group critique, as well as time to paint. The design of the class will be similar to the “Out of the Rut” class, but for students who desire more structure. All mediums and levels welcome. **M \$230, NM \$275. | P2**

Realistic Watercolor Portraits

Marty Kelley

8 WEEKS (MAY 2–JUNE 27)

MONDAYS, 6–9PM

[No class May 30]

✪ This class will focus on developing the specific skills needed to create realistic por-

traits in watercolor. We will work on mixing flesh tones, creating lost and found edges, and painting the ever-difficult hair. Each student will spend the entire eight weeks working on one portrait from his/her own photograph. This is not a drawing class or a basic watercolor class, though some of those skills will be discussed. Recommended for intermediate to advanced watercolor students.

M \$185, NM \$200. | P3

Texture Painting with Acrylics

Lana LeBlanc

8 WEEKS (MAY 3–JUNE 28)

SESSION 1: TUES, 10AM–1PM | **CM1**

SESSION 2: TUES, 6–9PM | **CM2**

[No class May 24]

B Invention, imagination and creative freedom combined with traditional methods will bring your ideas to life in this class. Celebrate light, color and dimension through painting, with acrylics and texture paints. Class begins with guided experimentation using a variety of texture paints and gels, on a small manageable panel. Students will explore what joyful event or memory you would like to share in your artwork. Bring your own photos or objects, and the instructor will have a collection of inspirational materials as well. Practicing balance, harmony, and composition, the instructor will guide you through building up your textures thoughtfully and with purpose. The opportunity to add dimensional objects, like shells, beads, mementos or small keepsakes to your painting will also be addressed.

M \$185, NM \$200. | P4

Watercolor for Absolute Beginners

Mia Mead

8 WEEKS (MAY 4–JUNE 22)

WEDNESDAYS, 9:30AM–12:30PM

B Painting in watercolor can be simple, relaxing and enjoyable, and can produce exquisite results. Join us as we work to debunk the myth that watercolor is intimidating or unforgiving. Together we will take a light-hearted approach to understanding water-

SPRING CLASSES AND WORKSHOPS



color without fear. Learn about watercolor paints, papers, brushes and more, as you work alongside other beginners to develop an understanding of color values, composition, and technique in a supportive group environment. On the first day, bring yourself and leave with a list of what you'll need for a "starter watercolor kit." *Materials fee: \$15.*

M \$185, NM \$200. | P5

Intermediate Watercolor

Mia Mead

8 WEEKS (MAY 4-JUNE 22)

WEDNESDAYS, 1-4PM

✦ Join us as we further develop our foundation in watercolor practices. Paint alongside other intermediate-level artists to further develop your technique and style in a supportive group environment, while working from still-life arrangements or photographs. Take the opportunity to push your traditional practices, making use of peer interaction and guidance. There will be demonstrations, individual instruction and group critiques.

M \$185, NM \$200. | P6

Oil Painting for Absolute Beginners

Robert Seaman

8 WEEKS (MAY 4-JUNE 22)

WEDNESDAYS, 10AM-1PM

B Oil painting can be a daunting and mysterious medium, but here we will work together to become comfortable with the materials, techniques, and practices. Through still-lives or photographs, students will learn the foundations of working in oil, from proper handling of mediums and paints, to application and execution. The rich colors of oil can bring your imagination to life. Utilize individual and group instruction as well as critiques to build your base as a beginner oil painter. Come to class on the first day to obtain your basic materials list for a simple "starter oil painting kit." Paint in oil with confidence! **M \$185, NM \$200. | P7**

Watercolor Landscapes

Lana LeBlanc

8 WEEKS (MAY 4-JUNE 22)

WEDNESDAYS, 6-9PM

✦ **B** Work from photographs and resource pictures to depict your favorite landscape

SPRING CLASSES AND WORKSHOPS

image using watercolors. The instructor will guide students in use of watercolor paints, and will address composition, color harmonies and atmosphere to achieve rich paintings. Class will consist of demonstration, hands-on painting, and group critique. Experience with watercolors is helpful but not required.

M \$185, NM \$200. | P8

Acrylic Painting Studio

Rosemary Conroy

7 WEEKS (MAY 5–JUNE 16)

THURSDAYS, 10AM–1PM

B Come build your skills or just fling around some paint in this free-form and fun acrylic painting class. The format will allow you the maximum amount of time to paint, but with plenty of feedback and instruction for those who want it. Each class includes a short overview of a painting fundamental and then it's time to get the brushes out and paint, paint, paint! You'll have the choice to interpret the set-up provided or to follow your own bliss. Painters of all levels welcome.

M \$160, NM \$180. | P9

PAINTING WORKSHOPS

Spring Comprehensive: Skies, Water, Trees and Rocks in Pastel

Robert Carsten, PSA, CPS

MONDAY–FRIDAY, APR. 25–29

9:30AM–4:30PM

✦ B Expand your artistic horizons in this fun and informative workshop. Hone your pastel painting skills and achieve dramatic and realistic effects that will enhance your paintings in a multitude of ways. We will explore aspects of both still and moving bodies of water - seas, lakes, harbors, rivers and cascades. Reflections, surface qualities, shadows, transparency

and more will be discussed and demonstrated. Single trees as a dramatic focus of a landscape, forest in the landscape, and intimate woodland scenes will be included. We can't forget the rocks, whether they be cliffs or solitary boulders covered with lichens and moss or the beauty of just pebbles. Then there will be skies to your heart's content—sunset, sunrise, fair or stormy, twilight and everything in between. Bring photos and/or sketches. All levels are welcome.

M \$455, NM \$500. | CAR1

Pastels – It's All About the Light

Robert K. Carsten, PSA, CPS

SAT. & SUN., JUNE 11 & 12 / 9:30AM–4:30PM

✦ B This two-day workshop is designed to give your creativity a boost. Using the subject matter of your choice, learn new ways to interpret subjects using organized light effect and corresponding color choices, and get the 'edge' on edges! Considerable attention will be given to further developing understanding and sensitivity to light's effects upon color, mass, and edges of forms within your paintings for strong, visual impact. There will be demonstrations, critiques and lots of painting time. All levels welcome. **M \$195, NM \$225. | CAR2**



Robert Carsten

SPRING CLASSES AND WORKSHOPS

Pastel Still Life/Floral Painting: Traditional and Non-Traditional Approaches

Robert K. Carsten, P.S.A., CPS

MONDAY-FRIDAY, AUG. 8-12 / 9:30AM-4:30PM

✪ **B** Explore the fundamentals of traditional, and dynamics of contemporary still life painting. Composition, practical color theory, and attention to achieving highly real, textural surfaces distinguish this Still Life and Floral workshop by a very popular instructor, arts writer and exhibitions juror. Experiment with perspective, spatial characteristics, and achieve stunningly rich color, strong contrast, and subtle color temperature variations to improve your painting skills and visual perception. Painting glass, ceramic and reflective surfaces as well as flowers will be our challenge with informative demonstrations, at-easel assistance, group critiques, and plenty of painting to provide a fun and educational pastel painting experience! All levels welcome. **M \$455, NM \$500. | CAR3**

Painting Spectacular Flowers

Robert O'Brien, AWS, NWS

SATURDAY, MAY 7 / 10AM-4PM

✪ **B** This watercolor course is open to all levels of painting ability with some drawing experience recommended. Students will learn basic floral painting techniques, with an emphasis on values and composition. The session will begin with a demonstration by the instructor with class painting to follow. The instructor will provide hands on guidance through the painting process. The course will focus on painting from photo-reference of flowers in an artistic and close-focus setting. There will be a critique and class discussion at the end of the day. **M \$95, NM \$115. | PWA**

**Scholarships and financial aid are available.
Contact the school office (603-924-7256) or
visit us online for an application.**



Camo Deconstructed

Holly Alderman

SATURDAY, MAY 7 / 10AM-1PM

✪ **B** Camouflage is a style of art that implies concealment, whether based on the coloration of animals or on abstract patterns. Camo is also an international fashion statement! Have you ever wondered where camouflage comes from or thought you could do great "camo" art in new colors? If you want to try your hand to make your own camo art statement, fashion statement or camo furniture, then this fun new workshop is for you. Class will cover technique demos for painting camo designs, as well as examples and brief overviews of several American painters who got their start in painting camo for the military. Students will watch excerpts of the documentary movie, *Invisible: Abbott Thayer and the Art of Camouflage* by Pam Peabody (whose dvd has been seen at the Smithsonian and Corcoran Gallery of Art). Students will sketch and paint their own interpretations of camo on paper and unprimed canvas, for a wall hanging or other decorative object. **M \$45, NM \$65. | PWB**

Decorative Floor Cloth Painting

Holly Alderman

SATURDAY, MAY 14 / 10AM-2PM

Floor cloths are a tradition in decorative arts. Learn how to make your own small floor cloth of painted canvas, or even a place mat! Class begins with several examples of checkerboard, striped, and rustic scenic floor cloths. This is



SPRING CLASSES AND WORKSHOPS

followed by an overview of techniques, including preparing the canvas; sketching; how to use the brushes or rollers, sponges, rags, tape for plaids; and mapping textures with grids, stencils, and blending glazes, splatter paint, and metallic colors. Some basic tools and a 24 x 30" precut canvas for a floor cloth are provided for each student, as well as seven basic paint colors. *Materials fee payable to instructor: \$12. M \$65, NM \$80. | PWC*

Still Life in Oils

Kathryn Briggs

SATURDAY, MAY 28 / 10AM-3PM

✪ **B** Working from a still life, students will be guided through the instructor's method and approach to oil painting. The class will outline value, edge relationships, and compositional simplicity. Students will discuss tips to represent a 3-dimensional object on a 2-dimensional surface. Student may paint along, or simply observe, all skill levels welcome.

M \$80, NM \$95. | PWD

Texture Painting with Acrylics

Lana LeBlanc

SATURDAY, MAY 28 / 10AM-3PM

Celebrate light, color and dimension in this



Chris Reid

one-day workshop, through painting with acrylics and texture paints. Combine invention, imagination and creative freedom with traditional methods to bring your ideas to life. In guided experimentation using a variety of texture paint and gels, explore portraying your own photos, objects or memorabilia in a mixed-media work of art. Focusing on balance, harmony, and composition, the instructor will guide you through building up your textures thoughtfully and with purpose, and students will be able to physically include memento objects on their canvas, creating a mixed media collage keepsake.

M \$80, NM \$95. | PWE

Painted Fabric Collage

Nancy Lefko

SATURDAY, JUNE 4 / 10AM-2PM

✪ **B** Do you have a fabric "stash bag" filled with your favorite bits and pieces? Then it's time to put them to use in a completely different way. In this one day workshop we'll combine patchwork, collage and paint to create a mixed media piece that's rich in texture and design. You will learn techniques that you can apply to different projects in the future.

M \$65, NM \$80. | PWF

SPRING CLASSES AND WORKSHOPS

Russian Folk Art Painting

Lana LeBlanc

SATURDAY, JUNE 18 / 10AM-3PM

✪ **B** Russian natives embellished their decorative objects in the home to reflect their connections with nature, flora, and the countryside. Learn about the symbolism and aesthetic of traditional Russian folk art painting, straight from Russian native, Lana LeBlanc. She will share her experience and painting techniques with students to achieve a beautiful and simple, decorative painting, inspired by the creations of Russian tradition and history. **M \$80, NM \$95. | PWG**

Plein Air with Oils

Kathryn Briggs

SAT. & SUN., JUNE 25 & 26 / 10AM-2PM

✪ Grab your paints and head outside to enjoy the SAC School grounds to paint en plein air in oils. This two-day workshop will allow students to try different locations, and will allow drying time between stages. The instructor will provide guidance in painting with an outdoor setup- experience in painting with oils is helpful but not required. **M \$130, NM \$165. | PWH**



✪ Plein Air in the Garden

Chris Reid, PSA, NHPS

SATURDAY, JULY 9 / 9AM-12NOON

[Rain date: July 10]

Join pastel artist Chris Reid, as part of the New Hampshire Pastel Society's Outreach Program, as she paints en plein air at Rosaly's Farm Stand in Peterborough. Bring your easel, your sunblock, and the supplies for your medium of choice, to soak in the natural floral surroundings at this scenic, local organic farm. Students will work independently on the grounds, and can meet at the School afterward for lunch and a group critique. Space is limited to 12 students—reservations are mandatory. *This class is free.* | **PWI**



Photography & Digital Media

WEEKLY

Intermediate PhotoShop Elements

Gyakyi Bonsu-Anane

8 WEEKS (MAY 2-JUNE 27)

MONDAYS, 10AM-1PM

[No class May 30]

Do you have some experience in Elements, and want to take it to the next level? Continue learning about Adobe's most affordable and easy-to-use program in this friendly class. Learn about tips and tricks to improve upon basic knowledge, increasing your ability to navigate the program. Practice using the standard Adobe tools, and learn about effects to achieve the look you want for your prints. Those who have taken beginners' Elements classes are encouraged to join. **M \$185, NM \$200. | DP1**

Scholarships and financial aid are available.

Contact the school office (603-924-7256) or

visit us online for an application.



SPRING CLASSES AND WORKSHOPS



PhotoShop & Digital Camera Basics

Rhonda MacLeod

8 WEEKS (MAY 2–JUNE 27)

MONDAYS, 6:30–8:30PM

[No class May 30]

B This basic 8-week class will teach you how to use your digital camera to take photos, and how to edit those photos in Photoshop Elements (Adobe's lowest priced and easiest to use photo editor). Topics covered will range from how to set up your camera to take the best photos possible, how to organize and archive your photos digitally and how to use Photoshop Elements to edit and produce wonderful photos and prints. No prior knowledge of image editing is needed!

M \$185, NM \$200. | DP2

Advanced PhotoShop Elements

Rhonda MacLeod

8 WEEKS (MAY 3–JUNE 28)

TUESDAYS, 6:30–8:30PM

Go beyond the elementary aspects of Photoshop Elements to explore its more advanced features in this intensive class. After a brief review of the primary tools (to make sure we're all on the same page) we get more in-depth, exploring panorama-stitching, editing group photos and special project applications: photo books, greeting/holiday cards and more. Learn how to maximize the effectiveness of this program to suit your needs,

projects and creative vision. Time will be set aside each week to answer your questions as you work, and to discuss any other challenges you face in the digital realm. If you can imagine it, instruction in PhotoShop Elements can help you do it! **M \$185, NM \$200. | DP3**

Intro to PhotoShop Elements

Gyakyi Bonsu-Anane

8 WEEKS (MAY 4–JUNE 29)

WEDNESDAYS, 10AM–1PM

B Come and learn Adobe's most affordable and easy-to-use program. Take your photos and create prints that you will be proud to display. We will learn about transforming images using the simple Elements tools, to yield stunning pictures. Also learn about tips and tricks to improve ease of use in the program. Learn about basic effects- contrast, exposure, layers, and more. This is a great beginner class for image editing and simple design. **M \$185, NM \$200. | DP4**

PHOTOGRAPHY & DIGITAL MEDIA WORKSHOPS

Picturesque Landscape Photography

Rhonda MacLeod

SATURDAY, MAY 7 / 10AM–4PM

Learn to compose and capture the lush landscape of the Monadnock Region. We will begin our day by discussing techniques that help to create great landscape photographs. Then, we will hit the road and put those techniques to use. We'll caravan to a handful of choice locations to photograph grand vistas as well as the more intimate views. After a brief break for lunch, we'll head back to SAC's digital lab to review what we've captured and learn how to turn images into prints. All in all, this is a great way to invigorate your photographic practices. **M \$95, NM \$115. | DPWA**

**Scholarships and financial aid are available.
Contact the school office (603-924-7256) or
visit us online for an application.**

SPRING CLASSES AND WORKSHOPS

Macro & Close-Up Photography

Guy Biechele

SATURDAY, MAY 14 / 10AM-2:30PM

B Through macro photography we can enjoy a whole new world of photographic subjects and opportunities. Insects, interesting flora, tiny details and patterns can fill our photographs. During this workshop we will discuss equipment and techniques for macro photography, spend time in the field photographing, and finish by reviewing and discussing the shots we took. **M \$70, NM \$90. | DPWB**

Black & White Photography

Rhonda MacLeod

SATURDAY, MAY 28 / 10AM-3PM

B Black and white photography is where it all began. All of the masters of photography produced black and white images. Now, in the digital age, there is a "Black and White" Renaissance, without the expense of a darkroom and the mess of chemicals! This class will involve looking at and discussing the work of some of the masters in the field. What makes a great black and white print? We will also look at how you can take your own great images, using some of the traditional techniques,

and some newer, modern approaches. Students will then use PhotoShop to produce a great image for prints. **M \$80, NM \$95. | DPWC**

Better Landscapes with Digital Cameras

Guy Biechele

SATURDAY, JUNE 4 / 10AM-2:30PM

B In this daylong workshop we will learn how to take better landscape photographs. We will explore how to use the special features on our digital cameras to make photographing techniques easier. After a discussion of the elements of good landscape photography, we will head into the field to practice at a few local sites. After a picnic lunch, (please bring your own,) and more photography, we will return to the classroom to review and discuss the photographs we took. **M \$70, NM \$90. | DPWD**

Digital Archiving

Heather Lawless

WEDNESDAY, JUNE 8, 4-8PM

B Scanning and archiving artwork is essential in the digital age. Whether you are submitting work for an exhibition show, completing a high school or art school portfolio, or



Guy Biechele

SPRING CLASSES AND WORKSHOPS

cataloging your vacation photos, this one-day workshop will empower you to get organized. From using images to starting a website, or preserving old images to be seen by future generations, this class will help you to understand your scanner, touch up images in Photoshop, and save files in the proper format for your desired applications. Bring in your sketchbooks, photos, film, slides or anything you would like to learn to scan. Find out what to look for when buying a scanner, or bring in a scanner you already own to get to know it better. **M \$65, NM \$80. | DPWE**

Self-Publishing Intensive

Heather Lawless

FRI-SUN, JUNE 10-12 / 10AM-1PM

B Learn to channel your artistic endeavors into a project that is fit to print. Self-publishing has never been more enticing, easy or cost-effective than right now. This fun intensive study will introduce you to print on demand publishing like Lulu and Blurb, teach you to create dynamic page layouts and cover designs, and delve into Microsoft Publisher and Adobe InDesign computer publishing programs. Plan out your projects (artists' books, exhibition catalogs, animation flip-books, cookbooks, novels, children's books, photo books, etc.) from conception to hard-copy in just one weekend! **M \$145, NM \$175. | DPWF**

Dynamic Powerpoint

Heather Lawless

WEDNESDAY, JUNE 15 / 4-8PM

B From professional presentations to family photo slide shows, PowerPoint is an impressive tool to visually convey art and information. Chances are you already own PowerPoint software as part of Microsoft Office, so now is the time to learn to use it! Discover how surprisingly simple it can be to make vivid presentations with photos, text, audio, animated transitions and even notes for the speaker that are invisible to the audience. Public speaking and presentations are easy with the proper tools and preparation. **M \$65, NM \$80. | DPWG**

Photographing Flowers

Rhonda MacLeod

SATURDAY, JUNE 18 / 10AM-3PM

B Spring is in full swing and summer is almost here, that means that flowers are blooming everywhere! Come and learn the art of taking beautiful photos of flowers. We will work with cut flowers, then take a trip and photograph flowers in the field (weather permitting.) Finally, we will come back to the digital lab and learn how to edit our photos using PhotoShop software. *Materials fee:* **\$10. M \$80, NM \$95. | DWPH**

Adobe Bootcamp Intensive

Heather Lawless

FRI-SUN, JUNE 24-26 / 10AM-1PM

Get basic training on three Adobe programs, (Photoshop, Illustrator, InDesign,) to create a strong foundation for image editing, graphic design and publishing layout. The Adobe Creative Suites can be intimidating, but are growing into vital tools for artists in the digital age. By learning the basics of these three programs, you will understand Adobe interfaces, tools, and how these three programs can be integrated to achieve sophisticated design. **M \$145, NM \$175. | DPWI**

Competitive Applications & Portfolios (Work Session)

Heather Lawless

SATURDAY, JUNE 11 / 1:30-4:30PM

🌟 **B** Offered as a supplement to the Competitive Applications & Portfolios seminar, presented as part of the Artist Professional Development Series (see p. 6), this workshop will give you the opportunity to use Sharon Arts Center's Digital Lab to edit and format your portfolio images. Learn photographing and scanning tips, color correction, cropping, photo retouching, and size and resolution formatting. Leave the classroom with a polished digital portfolio, ready to submit to job and grant opportunities. **M \$40, NM \$50. | PD4**

SAC FACULTY BIOGRAPHIES

HOLLY ALDERMAN: is an artist and photographer whose decorative arts are inspired by the beauty of nature, landscape and weather. Favorite themes include ferns and mica, golden light, gardens, architecture and sculpture. The Monadnock Art Tour includes her studio and garden in Jaffrey. Her art is installed in residences and restaurants from La Jolla to London and has appeared at the White House and Saint-Gaudens National Historic Site, on TOH, Dream House and Today. She was a mural fellow at the National Academy in New York, and a teaching assistant in Design Science at Harvard College. MonadnockDailyPhoto.blogspot.com and HollyAlderman.com.

MARTA BERNBAUM: BFA from the Mass College of Art. Her work focuses on trees and flowers and includes beads and sculptural pieces. Her work is available at Don Muller Gallery in Northampton, MA, and the SAC Craft Gallery. She teaches at Snow Farm, Waterfalls Art Center, and out of her studio in Brattleboro, VT. www.jmbglass.com

GUY BIECHELE: Member of a group of 21 international photographers showcasing state-of-the art digital photography in exhibits in Japan, Australia, Denmark, Germany, Switzerland and the US. Guy especially enjoys outdoor photography and his preferred subjects are New England landscapes, Maine coast seascapes, lighthouses, architecture, and wildlife. www.guybiechele.com

GYAKYI BONSU-ANANE: Has worked in the field of multimedia for over 20 years. Taught multimedia production at The New School for Social Research, The City College of New York, and Franklin Pierce College. He also works at the Peterborough Camera Shop.

✪ **MIZZY BOYLE:** A mixed and multi-media artist, graduated from Skidmore College with a BS in Art Education. She has taught at UNH and anywhere else they'd let her. Mizzy's interests run the gamut from Ceramics and Polymer Clay to Beading and Lampworking with all aspects of Fiber Arts. Her work has been in many Galleries and her Button line sold internationally. Beading began in the 60s and has never lost its sparkly appeal.



KATHRYN BRIGGS: After studying at Moore College of Art and Design, Pennsylvania Academy of Fine Art, and West Chester University, Kathryn entered the world of professional fine art portraiture. She works primarily in watercolor, oil, and charcoal, and is inspired by the nuance of human expression inherent in each face. Kathryn is about to enter an MFA program in preparation to become a university professor.

VLADIMIR BARSUKOV: PhD in physics and mathematics from St. Petersburg University in Russia, he shows his work at galleries throughout New England. He is a member of the Cambridge and Concord Art Associations in MA. www.perpetualmobiles.com

ROBERT K. CARSTEN, PSA, CPS: is an award-winning artist who teaches workshops from Maine to Florida. Recipient of a Juror's Choice Award at this year's national exhibition at the Southern Vermont Art Center, he is a regular contributing writer to the *Artist's Magazine* and the *Pastel Journal* and is a board member of the Pastel Society of America. His works have appeared in many publications. www.robertcarsten.com

ROSEMARY CONROY: has had a long and winding path—being a professional artist is her third career (after teaching computers to stockbrokers and promoting land conservation to Granite Staters.) She was inspired to fulfill her life-long dream of painting full-time after watching her former office building collapse on 9/11. Largely self-taught, she nevertheless has enjoyed ever-increasing success as an artist and believes that passion for your subject is just as important as any formal pedigree. www.studiobuteo.com

JANET DUCHESNEAU: BA, Green Mountain College, VT; studied with Gerry Williams, NH's artist laureate; ceramic artist and instructor for over 35 years; juried member, League of NH Craftsmen. Janet has taught in clay at SAC since the 1980s, and now also teaches in glass. She has studied glass with Jordana Korsen, Bandhu Dunham and Nancy Tobey (at Snow Farm), and with Marta Bernbaum. Janet's work is available at the SAC Fine Craft Gallery, League shops, Tates Gallery (New Boston, NH), Woodworkers Gallery (Milford, NH), and in various shops in Newport, RI.

CONNIE GRAY: BS, Skidmore College; has taught Weaving and Fiber Arts for 20 years at SAC, also studied with Leslie Voiers, Nell Znamierowski, and taught at Harrisville Designs, NE Weavers Seminar, Fiber Arts Center, Amherst, MA, and privately. Also has studied Polymer Clay with Tory Hughes, Kathleen Dustin, Sandra McCaw, Marcia Herson, and Donna Kato. A workshop junkie! Member of National and Regional Guilds.

MARY ISELIN: studied painting at McGill University and with Robert Higgins, Alex Farquharson, and Robert Collier. Her work is on display at SAC's Juried Artist Gallery and Monadnock Fine Art Gallery in Keene, NH. www.maryiselinfineart.com

ERYK JADASZEWSKI: is a professionally trained horticulturist for over 25 years. He holds certifications as a Nursery Professional, Landscape Contractor, and Arborist. Currently owner/operator of Moose Maple Nursery Dublin, NH. www.moosemaplenursery.com

✪ **ELIZABETH JOHANSSON:** has been working as a visual artist for the past 30

years. Her drawings and paintings are often based on the still life, although portraits, self-portraits and landscapes are included in the spectrum of her work. Her drawings can be found in the permanent collections of The Currier Museum of Art, The Museum of Fine Arts, Boston and the DeCordova Museum. Johansson's work has been represented by galleries in Boston and New York and currently at Clark Gallery in Lincoln, MA. Elizabeth studied at the School of the Museum of Fine Arts in Boston. Along with working in her studio, Elizabeth was on the faculty of the New Hampshire Institute of Art for over 20 years. In 1982 she began teaching at the Sharon Art Center; now she is returning to join us once again.

MARTY KELLEY: Attended the School of the Museum of Fine Arts in Boston and has an Ed. Degree from the University of Central Florida. He has authored and illustrated six children's books and was selected as official illustrator of New Hampshire for the 2005 Summer Reading Program. www.martykelley.com

LANA LEBLANC: was born in the Ukraine, she was mentored in painting with oils by the wonderful Malceva Alla, a master of the Leningrad School of Painting in Russia. After 8 years training with Malceva Alla, in September 2009, she was granted her first personal exhibition in Cherkassy. Lana, and her son Stas, moved to the US to be with her husband Scott LeBlanc in December of 2009. Lana now lives and paints in Hancock, New Hampshire. Her work is featured in private collections in both Russia and the U.S., and her work has been featured on Russian television. Her teaching experience has been in working with all ages and abilities.

NANCY LEFKO: is a regional artist specializing in collage and mixed media. With a Master's Degree in Education, Nancy taught elementary school for many years before starting a family and now combines her love of art with her passion for teaching. She teaches online workshops in collage and mixed media and her artwork has been collected internationally. She has been published numerous times in *Somerset Studio*; *Cloth, Paper, Scissors*; *Art Journaling by Somerset Studio* and *Somerset Studio Gallery* magazines. www.mycollageart.com

RHONDA MACLEOD: Studied photography at Stonehill College and Keene State

College. Freelance photographer for more than 20 years. Currently an 8th-grade science teacher, she spends her free time taking pictures. Current president of Monadnock Camera Club. She has won local, regional and international awards for her photography.

MARIA M. MEAD: "Mia" graduated from the School of the Museum of Fine Arts in Boston and moved to Peterborough, NH in 2008. Trained in oil painting, but now working primarily in watercolor, she currently teaches in Boston. She paints throughout New England and France where she and her late husband traveled each year. Member of the Salmagundi Club in New York City she shows there, at the Rhode Island Watercolor Society and has paintings in various small collections in the U.S.

JAMES MITSCHMYER: BFA, Maine College of Art, 2005 (ceramics); studied at The International Workshop for the Ceramic Arts in Tokoname, Japan. He uses various throwing and hand-building techniques to communicate spiritual ideas. James is the Clay Studio Manager at SAC and a member of the New Hampshire Potters' Guild. www.jamesmitschmyer.com

ROBERT O'BRIEN: Watercolor painter for over 30 years, focuses on landscape and architectural studies. Featured in *American Watercolor Magazine* (2003) and in *Splash 9, The Best of Watercolor* (Oct. 2006.) www.robertjobrien.com

ELLA RANK: Whether as a Waldorf school parent or traveling and living in the US or abroad, the study of artistic traditions formally and informally has shaped her goals. While living in England, a love of the country's sheep and their wool has led her self-expression in recreating unique sheep and owls in fleece.

JOY RASKIN: BFA, RI School of Design, MFA, Univ. of MA. Joy has studied at Penland School of Crafts, Peters Valley Craftsmen, Haystack Mt. School of Crafts and the Gemology Institute of America and is a juried member of the League of NH Craftsmen and SAC Fine Craft gallery. Her flatware and jewelry has sold at various shows, including Craft Boston, Crafts at the Castle, ACC in Baltimore, the Philadelphia Craft Show and the Smithsonian. Her work is in the permanent collection of the White House. She has won many awards including an Art-



ist Fellowship from the New Hampshire State Council on the Arts. Her work has appeared in *The Crafts Report*, *Boston Globe*, *Metalsmith* and *Southern Accents*. www.joyraskin.com

CHRIS REID: has received numerous awards including the "Best in Show," National Northeast Pastel Exhibition and the Pastel Journal Award, Pastel Painter's of Maine's 7th annual international juried exhibit. Working en plein air, Reid's work is "rich in color... landscapes with powerful abstract elements" (Art New England) Chris's work can be seen at Gallery 4 India Street, Nantucket, MA, Aries East Gallery, Brewster, MA, Art 3, Manchester, NH, Sharon Arts Center, Peterborough, NH. Chris is a member of the NH Art Association, the Pastel Society of America, the NJ and NH Pastel Societies.

GARY RUUSKA: Following his studies at the School of the Museum of Fine Arts in Boston, Gary enjoyed a 20-year career as a studio photographer at the Museum of Fine Arts, Boston. He is now a full-time artist working in colored pencil, acrylic and graphite. His work is available at the SAC Juried Artist Gallery. www.artbygaryruuska.com

ROBERT SEAMAN: A graduate of Williams College, Artist in Residency at The Legacy Publishing Group, freelance illustrator. His work is available at the SAC Juried Artist Gallery. www.368art.com

CELESTE WASILEWSKA: BFA, School of the Museum of Fine Arts, Boston and Tufts University. M.Ed. from Antioch New England. Celeste has taught at DeCordova Museum School, Harrisville Designs, Snow Farm, Worcester Center for Craft, and the NH Institute of Art.



VOLUNTEER, "EARN & LEARN," AND SCHOLARSHIP INFO

"EARN & LEARN" VOLUNTEER PROGRAM & REDEEMING VOLUNTEER HOURS: The "Earn & Learn" Program allows our volunteers to redeem hours of service toward full or partial class tuition and/or their memberships. Volunteers must contact the registrar to obtain a Volunteer Voucher to redeem hours towards the benefit of their choice at least 10 business days before registration or renewal of membership. Volunteers may redeem 10 current hours to obtain their Annual Individual Membership. The same volunteer may upgrade to a Family Membership for \$15. For every two hours earned, a volunteer can receive one hour of educational time free (benefits do not cover lab/materials/model fees, or open studio time). For information about volunteering, call Laura at 603-924-7256 or email volunteers@sharonarts.org.

TUITION CREDITS: Volunteers and faculty with tuition vouchers may register for classes and workshops on a space available basis. They will be added to class after paid students.

SCHOLARSHIPS: Scholarships are awarded to students of all ages and abilities to help those who would otherwise be unable to experience the joys of art and craft. Awards are based on financial hardship, a passion for art and learning, and a desire to become a part of the Sharon Arts community. Applications are available at www.sharonarts.org. If you have questions, call Alexandra Wall at 603-924-7256, ext. 307.

DONATIONS TO OUR SCHOLARSHIP FUNDS: Gifts to our scholarship fund can be at any level. They are always appreciated and can be earmarked for specific media or programs of interest to the donor. Gifts of any kind donated to the Sharon Arts Center are tax deductible and help to contribute to our mission to make art accessible to everyone in our community. To make a donation, contact Alexandra Wall at 603-924-7256, ext. 307, or by e-mail at alexandra@sharonarts.org.

For more information about volunteering, call 603.924.7256 or email volunteers@sharonarts.org

Take **10% OFF** your
Class Registration
(Weekly or Workshop)

Redeemable by students
who bring a **NEW** friend
to Sharon Arts for that
same class. (Friend must be
a brand new student to SAC.)

My friend's name:

Class name:

Offer valid for Spring 2011
classes and workshops only.
Cannot be combined with
other offers or discounts.



Gary Ruuska



4 WAYS TO REGISTER

1. By phone or fax: Call 603.924.7256 or fax 603.924.6074
2. In person: The office is open from 8:30–4:30, Monday through Friday.*
3. By e-mail: register@sharonarts.org
4. By mail: Send your payment with the registration form at right to: Sharon Arts Center, 457 Route 123, Sharon, NH 03458-9014

SCHOOL POLICIES

PHOTOGRAPHY: Sharon Arts reserves the right to photograph any classes, students, events, and art, for promotional use including but not limited to print, web, social media, and advertising. If you wish not to be photographed, please notify the school office in writing.

ACCESSIBILITY: The Art Center School of Art & Craft is fully handicap accessible and equipped with an elevator.

CELL PHONES: Out of consideration for the instructor and fellow students, we ask that cell phones be turned off or to "silent/vibrate" mode during class.

STUDIO SAFETY: Sharon Arts is committed to making the studio programs as safe as possible. Students and faculty are urged to familiarize themselves with possible health hazards in the areas in which they are working.

TUITION ENROLLMENT & CANCELLATION POLICY: Students are considered registered when tuition has been received in full. Students mailing checks may hold their spot with a credit card. If a check is not received within 7 business days, tuition will be charged to card on file. SAC reserves the right to cancel an incomplete registration, after attempts are made to contact the student. Registrations made within a week of class must be paid for in full at time of registration. A minimum enrollment is required for all classes to run. If a class is full, students will be wait-listed and notified if space becomes available, completing registration. If a class is canceled due to low enrollment, students will be given 1 week's notice; they will be able to transfer registration to another offering, or can receive a full tuition refund (2–3 weeks for processing). Memberships and materials purchased at the time of registration are non-refundable. You will receive a confirmation and supply list before class, via e-mail or mail.

WITHDRAWALS & REFUNDS: Sharon Arts cares about your experience with us. If at any time you are unsatisfied with an educational offering, you are encouraged to speak with our registrar or School Director to explore other options. Students can receive a refund in the form of a check (less a \$20 processing fee) for withdrawals made a minimum of two weeks (10 business days) prior to start of class. After that time, no tuition vouchers or refunds will be issued unless documentation of a medical emergency is presented to the School Director (see withdrawal instruction below). There are no refunds or credits for missing a regular class or workshop. These policies are strictly enforced to maintain our contractual commitments to our instructors. Formal notification of withdrawal must be made in writing or in person to our registrar (register@sharonarts.org) or School Director (alexandra@sharonarts.org) in order to be processed. Verbal notification to the instructor and/or failure to attend is not regarded as official notice of withdrawal. ■

**Registration for weekly classes
closes one week before class begins**

Spring 2011 Course Registration, Membership, & Contribution Form

Sharon Arts Center • 457 Route 123 • Sharon, NH 03458-9014

Name _____

If under 18, please state age: _____

Name of parent/guardian: _____

Address _____

City _____

State _____

Zip _____

Home phone _____

Other phone _____

E-mail _____

I am an artist and would like to receive Calls for Entry

MEMBERSHIP

ONE-YEAR MEMBERSHIPS

(Membership dues are not refundable)

Individual Membership

\$40

Family Membership

\$60

(for 2 adults and children under 18)

\$

Membership Total

SCHOOL OF ART & CRAFT

Class Code	Class Name	Day & Time	Lab/Model Fee	Price*
<i>* Those without a current Sharon Arts Membership please add a \$10 registration fee</i>				
Class / Workshop Total				\$

SCHOOL FUND GIVING

\$500+ Patron

\$100+..... Friend

\$250+..... Sponsor

\$1-\$99..... Donor

\$

My employer will match my contribution. The form is enclosed.

Contribution Total

GRAND TOTAL

\$

PAYMENT

Method of Payment

Check

VISA

MasterCard

AmEx

Discover

Check # _____

--	--	--	--	--	--	--	--	--	--	--	--	--	--	--	--	--	--	--	--

.....
Authorization Signature

.....
Expiration Date

☛ Checks Help! Every year Sharon Arts and other non-profit organizations pay thousands of dollars in credit card processing fees. We encourage you to help us keep our costs down by paying by check whenever possible. *Thank you!*

Sharon Arts Center

School of Art & Craft

457 Route 123

Sharon, NH 03458

603.924.7256

www.sharonarts.org



THE MISSION of the Sharon Arts Center, a non-profit organization, is to support and serve artists and craftspeople, to engage our community in the artistic process, and to foster the relationship between artists and the community through education, exhibitions, the promotion and sale of art and craft, as well as through special programs and events.



New Hampshire
State Council on the
Arts

NHRECOVERY
putting new Hampshire to work

Sharon Arts Center is sponsored in part by THE NEW HAMPSHIRE STATE COUNCIL ON THE ARTS, THE NATIONAL ENDOWMENT FOR THE ARTS THROUGH THE AMERICAN RECOVERY AND REINVESTMENT ACT, THE SUSAN A. & DONALD P. BABSON CHARITABLE FOUNDATION, THE BEAN FAMILY FOUNDATION, THE MAX & VICTORIA DREYFUS FOUNDATION, THE GRIMSHAW-GUDEWICZ CHARITABLE FOUNDATION, THE KINGSBURY FOUNDATION, and art lovers like you!